

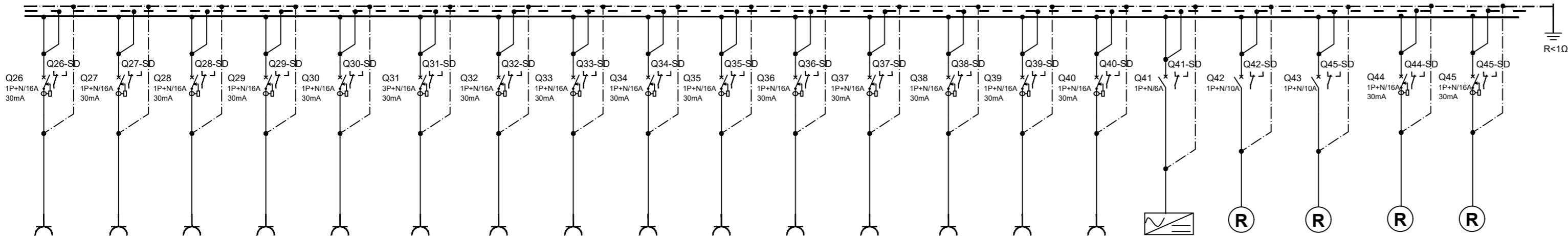
N2XH 5x16 mmp
de la TEG

TE-E2.2
IP 55

rezerva spatiu 25%

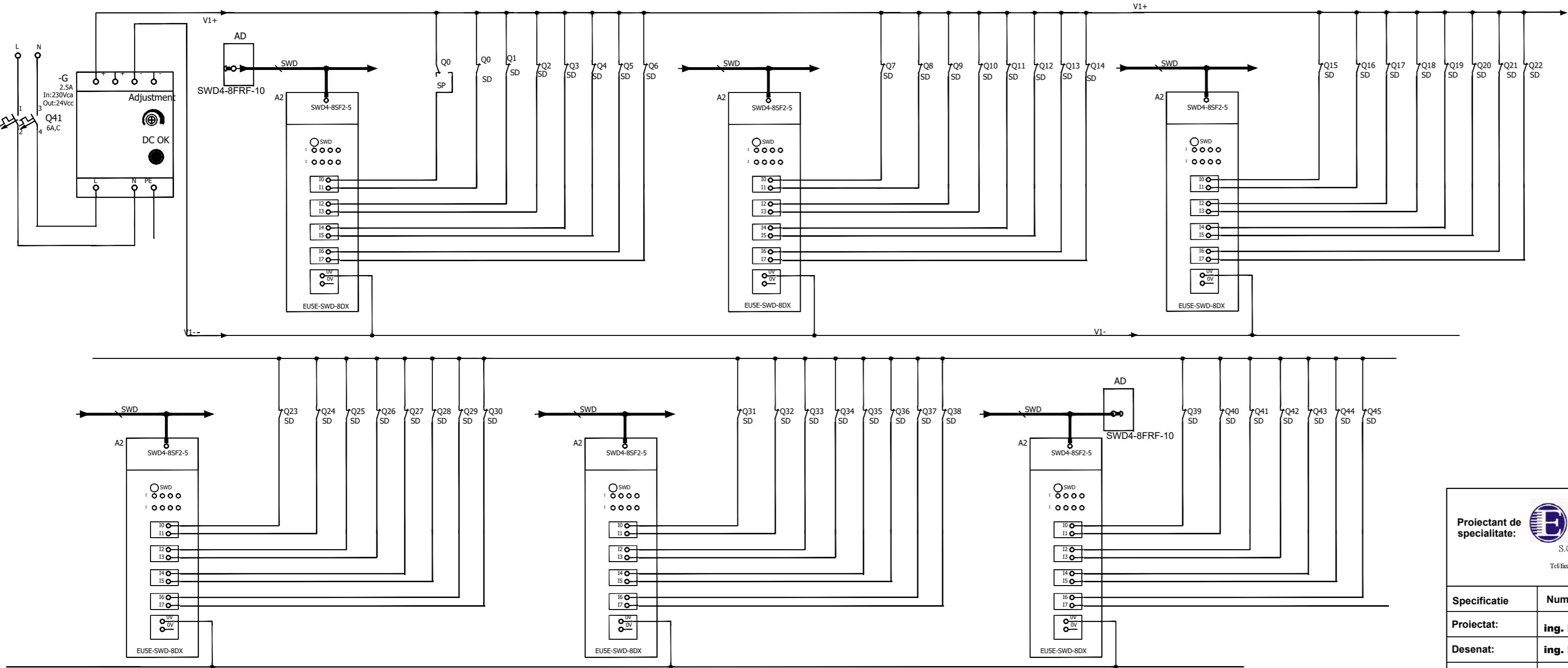
P=64,7kW ;
Pa=34,8kW ;
Ic=55,8A;
Isc=3,5kA

DENUMIRE CIRCUIT	C1	C2	C3	C4	C5	C6	C7	C8	C9	C10	CP1	CP2	CP3	CP4	CP5	CP6	CP7	CP8	CP9	CP10	CP11	CP12	CP13	CP14	CP15	
Pi [kW]	0.567	0.567	0.567	0.4	0.42	0.36	0.23	0.65	0.65	0.33	2	2	2	2	2	2	2	2	2	2	2	2	2	2	2	
Pa[kW]	0.567	0.567	0.567	0.4	0.42	0.378	0.23	0.65	0.65	0.33	2	2	2	2	2	2	2	2	2	2	2	2	2	2	2	
Ic [A]	2.74	2.74	2.74	1.93	2.03	1.83	1.11	3.14	3.14	1.59	9.66	9.66	9.66	9.66	9.66	9.66	9.66	9.66	9.66	9.66	9.66	9.66	9.66	9.66	9.66	
Sect. CYFF [mm²]	N2XH 3x1,5 1P+N/10A	N2XH 3x1,5 1P+N/10A	N2XH 3x1,5 1P+N/10A	N2XH 3x1,5 1P+N/10A	N2XH 3x1,5 1P+N/10A	N2XH 3x1,5 1P+N/10A	N2XH 3x1,5 1P+N/10A	N2XH 3x1,5 1P+N/10A	N2XH 3x2,5 1P+N/16A/30mA	N2XH 3x2,5 1P+N/16A/30mA	N2XH 3x2,5 1P+N/16A/30mA	N2XH 3x2,5 1P+N/16A/30mA	N2XH 3x2,5 1P+N/16A/30mA	N2XH 3x2,5 1P+N/16A/30mA	N2XH 3x2,5 1P+N/16A/30mA	N2XH 3x2,5 1P+N/16A/30mA	N2XH 3x2,5 1P+N/16A/30mA	N2XH 3x2,5 1P+N/16A/30mA	N2XH 3x2,5 1P+N/16A/30mA	N2XH 3x2,5 1P+N/16A/30mA	N2XH 3x2,5 1P+N/16A/30mA	N2XH 3x2,5 1P+N/16A/30mA	N2XH 3x2,5 1P+N/16A/30mA	N2XH 3x2,5 1P+N/16A/30mA	N2XH 3x2,5 1P+N/16A/30mA	
PROTECTIE	L1	L2	L3	L1	L2	L3	L1	L2	L1	L1	L2	L3	L1	L2	L3	L1	L2	L3	L1	L2	L3	L1	L2	L3	L1	
REPARTITIE FAZA	Circ ilum gen saloane	Circ ilum gen saloane	Circ ilum gen saloane	Circ ilum cabinet+ gr.sanitar	Circ ilum gen sala mese	Circ ilum hol	Circ ilum gr.sanitar saloane	Circ ilum console	Circ ilum console	Circ ilum console	Circ prize sale mese	Circ prize sale mese	Circ prize cabinete	Circ prize cabinete	Circ prize cabinete	Circ prize cabinete	Circ prize cabinete	Circ prize cabinete	Circ prize gr. Sanitar	Circ prize gr. Sanitar	Circ prize salon	Circ prize console	Circ prize console	Circ prize salon	Circ prize salon	Circ prize console



CP16	CP17	CP18	CP19	CP20	CP21	CP22	CP23	CP24	CP25	CP26	CP27	CP28	CP29	CP30	CC1	R1	R2	R3	R4
2	2	2	2	2	2	2	2	2	2	2	2	2	2	2	0.05				
2	2	2	2	2	2	2	2	2	2	2	2	2	2	2	0.05				
9.66	9.66	9.66	9.66	9.66	9.66	9.66	9.66	9.66	9.66	9.66	9.66	9.66	9.66	9.66	0.24				
N2XH 3x2,5 1P+N/16A/30mA	N2XH 3x2,5 1P+N/16A/30mA	N2XH 3x2,5 1P+N/16A/30mA	N2XH 3x2,5 1P+N/16A/30mA	N2XH 3x2,5 1P+N/16A/30mA	N2XH 3x2,5 1P+N/16A/30mA	N2XH 3x2,5 1P+N/16A/30mA	N2XH 3x2,5 1P+N/16A/30mA	N2XH 3x2,5 1P+N/16A/30mA	N2XH 3x2,5 1P+N/16A/30mA	N2XH 3x2,5 1P+N/16A/30mA	N2XH 3x2,5 1P+N/16A/30mA	N2XH 3x2,5 1P+N/16A/30mA	N2XH 3x2,5 1P+N/16A/30mA	N2XH 3x2,5 1P+N/16A/30mA	N2XH 3x2,5 1P+N/16A/30mA	1P+N/10A	1P+N/10A	1P+N/16A/30mA	1P+N/16A/30mA
L2	L3	L1	L2	L3	L1	L2	L3	L1	L2	L3	L1	L2	L3	L1	L2	L1	L2	L3	L1
Circ prize console	Circ prize salon	Circ prize salon	Circ prize console	Circ prize console	Circ prize salon	Circ prize salon	Circ prize console	Circ prize console	Circ prize salon	Circ prize salon	Circ prize console	Circ prize console	Circ prize salon	Circ prize hol	Circ sursa cc	Rezerva	Rezerva	Rezerva	Rezerva

SPECIFICATIE TEHNICA TABLOU ETAJ2-TR2 - TE-E2.2			
NR CRT	DENUMIREA ECHIPAMENTULUI	FABRICAT	BUC
Q0	Intrerupator automat 4P/63A, curba C,-Icu= 10kA cu protectie la suprasarcina si scurtcircuit	Eaton sau similar	1
Q1-Q10 Q44-Q45	Intrerupator automat 1P+N/10A, curba C,-Icu= 10kA cu protectie la suprasarcina si scurtcircuit	Eaton sau similar	12
Q11-Q40 Q44,Q45	Intrerupator automat 1P+N/16A + modul protectie diferentiala 30mA,-Icu= 10kA curba C, cu protectie la suprasarcina, scurtcircuit si diferentiala	Eaton sau similar	32
Q41	Intrerupator automat 1P+N/6A, curba C,-Icu= 10kA cu protectie la suprasarcina si scurtcircuit	Eaton sau similar	1
Q0-SD - Q45-SD Q0-SP -	Contact auxiliar semnalizare declansare intrerupator Contact auxiliar semnalizare pozitie intrerupator	Eaton sau similar	46
G	Sursa de alimentare -1-phase, 100-240Vac / 24V DC- 2,5A	Eaton sau similar	1
-A2	Module digitale, I/O module, SmartWire-DT, 24 V CC, 8DI, 8 intrari	Eaton sau similar	6
AD	Adaptor de la cablu plat la cablu rotund SmartWire-DT	Eaton sau similar	2
SWD	Cablu plat -SmartWire-DT- 8 Pini	Eaton sau similar	set
Q27	Intrerupator automat 1P+N/6A, curba C,-Icu= 10kA cu protectie la suprasarcina si scurtcircuit	Eaton sau similar	1



Proiectant de specialitate: EDEN DESIGN S.C. EDEN DESIGN S.R.L., RO2651995, CUI RO7116623 Str. Dneprovelski nr.9-10, Municipiul Ploiesti, Jud. Arges Tel/fax 0248 610 155, e-mail: office@eden-design.ro, web: www.eden-design.ro		Beneficiar / AUTORITATEA CONTRACTANTA: Spital de Pneumoftiziologie,, Sf. Andrei"-Valea Iasului Amplasament: Com. Valea Iasului		Nr proiect: 2/2022
Specificatie	Nume	Semnat	Scara:	Faza proiect: PT
Proiectat:	ing. Nedelescu Razvan			Titlu planşa: SCHEMA ELECTRICA TABLOU ETAJ 2-TR2- TE-E2.2
Desenat:	ing. Nedelescu Razvan		Data: MAR 2022	
Verificat:	ing. Predescu Razvan			Nr.planşa: IECT 70